

Diaqua[3,5-bis(4-pyridyl)-1*H*-1,2,4-triazole- κ N³](pyridine-2,6-dicarboxylato- κ^3 O²,N,O⁶)nickel(II)

Feng-Jie Cheng,^a Yi-Sen Wang^b and Yan-Cheng Liu^{a*}

^aKey Laboratory for the Chemistry and Molecular Engineering of Medicinal Resources (Ministry of Education of China), School of Chemistry & Chemical Engineering of Guangxi Normal University, Guilin 541004, People's Republic of China, and

^bPetrochemical Research Institute of PetroChina Co. Ltd, Beijing 100195, People's Republic of China

Correspondence e-mail: ycliugxnu@yahoo.cn

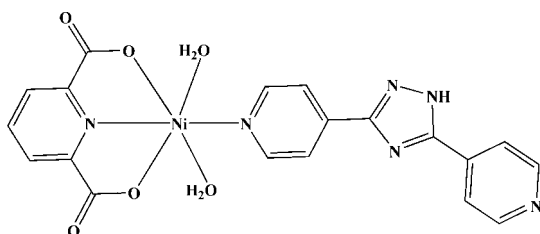
Received 9 December 2010; accepted 21 December 2010

Key indicators: single-crystal X-ray study; $T = 293$ K; mean $\sigma(\text{C}-\text{C}) = 0.006$ Å; R factor = 0.063; wR factor = 0.104; data-to-parameter ratio = 11.4.

In the title compound, $[\text{Ni}(\text{C}_7\text{H}_3\text{NO}_4)(\text{C}_{12}\text{H}_9\text{N}_5)(\text{H}_2\text{O})_2]$, the Ni^{II} atom is coordinated in a distorted octahedral geometry by one N and two O atoms from a pyridine-2,6-dicarboxylate ligand, one N atom from a 3,5-bis(4-pyridyl)-1*H*-1,2,4-triazole ligand in equatorial positions and two water molecules in axial positions. The crystal packing is consolidated by intermolecular O—H...O, O—H...N and N—H...O hydrogen bonds.

Related literature

For synthesis of the 1*H*-3,5-bis(4-pyridyl)-1,2,4-triazole (BPT) ligand, see: Liu *et al.* (2004). For BPT–metal complexes, see: Huang *et al.* (2010*a,b*).



Experimental

Crystal data

$[\text{Ni}(\text{C}_7\text{H}_3\text{NO}_4)(\text{C}_{12}\text{H}_9\text{N}_5)(\text{H}_2\text{O})_2]$
 $M_r = 483.07$

Monoclinic, $C2/c$
 $a = 26.434$ (5) Å
 $b = 6.0190$ (12) Å
 $c = 26.170$ (5) Å
 $\beta = 105.69$ (3)°

$V = 4008.7$ (13) Å³
 $Z = 8$

Mo $K\alpha$ radiation
 $\mu = 1.02$ mm⁻¹
 $T = 293$ K
 $0.32 \times 0.21 \times 0.11$ mm

Data collection

Bruker SMART CCD area-detector diffractometer
Absorption correction: multi-scan (*SADABS*; Sheldrick, 1996)
 $T_{\min} = 0.768$, $T_{\max} = 0.910$
10662 measured reflections
3534 independent reflections
2669 reflections with $I > 2\sigma(I)$
 $R_{\text{int}} = 0.071$

Refinement

$R[F^2 > 2\sigma(F^2)] = 0.063$
 $wR(F^2) = 0.104$
 $S = 1.11$
3534 reflections
310 parameters
7 restraints

H atoms treated by a mixture of independent and constrained refinement
 $\Delta\rho_{\text{max}} = 0.33$ e Å⁻³
 $\Delta\rho_{\text{min}} = -0.33$ e Å⁻³

Table 1

Hydrogen-bond geometry (Å, °).

$D-H\cdots A$	$D-H$	$H\cdots A$	$D\cdots A$	$D-H\cdots A$
$\text{N5}-\text{H5}\cdots\text{O4}^{\text{i}}$	0.88 (4)	1.81 (4)	2.685 (5)	179 (7)
$\text{O5}-\text{H5B}\cdots\text{O1}^{\text{ii}}$	0.86 (4)	1.87 (4)	2.718 (5)	168 (5)
$\text{O5}-\text{H5C}\cdots\text{O2}^{\text{iii}}$	0.86 (4)	1.89 (4)	2.705 (5)	160 (4)
$\text{O6}-\text{H6B}\cdots\text{N6}^{\text{iv}}$	0.87 (4)	1.93 (4)	2.781 (5)	167 (6)
$\text{O6}-\text{H6C}\cdots\text{O3}^{\text{v}}$	0.86 (4)	2.39 (4)	3.246 (5)	169 (8)
$\text{O6}-\text{H6C}\cdots\text{O4}^{\text{v}}$	0.86 (4)	2.41 (7)	3.081 (5)	135 (6)

Symmetry codes: (i) $x + \frac{1}{2}, y + \frac{1}{2}, z$; (ii) $-x + \frac{1}{2}, -y + \frac{3}{2}, -z$; (iii) $x, y - 1, z$; (iv) $-x + 1, y + 1, -z + \frac{1}{2}$; (v) $x, y + 1, z$.

Data collection: *SMART* (Bruker, 2007); cell refinement: *SAINT* (Bruker, 2007); data reduction: *SAINT*; program(s) used to solve structure: *SHELXS97* (Sheldrick, 2008); program(s) used to refine structure: *SHELXL97* (Sheldrick, 2008); molecular graphics: *PLATON* (Spek, 2009); software used to prepare material for publication: *SHELXL97*.

The authors thank the National Natural Science Foundation of China (grant No. 20861002), the Natural Science Foundation of Guangxi Province (grant Nos. 0991012Z, 0991003), the Education Department Foundation of Guangxi Province (grant No. 200807MS014), as well as the Key Laboratory Open Fund of the Ministry of Education and the Doctoral Fund of Guangxi Normal University for financial support. We also thank Dr F.-P. Huang for assistance with the crystallographic analysis.

Supplementary data and figures for this paper are available from the IUCr electronic archives (Reference: CV5017).

References

- Bruker (2007). *SMART* and *SAINT*. Bruker AXS Inc., Madison, Wisconsin, USA.
Huang, F.-P., Tian, J.-L., Li, D.-D., Chen, G.-J., Gu, W., Yan, S.-P., Liu, X., Liao, D.-Z. & Cheng, P. (2010*a*). *CrystEngComm*, **12**, 395–400.
Huang, F.-P., Tian, J.-L., Li, D.-D., Chen, G.-J., Gu, W., Yan, S.-P., Liu, X., Liao, D.-Z. & Cheng, P. (2010*b*). *Inorg. Chem.* **49**, 2525–2529.
Liu, H. B., Gao, J. M., Maynard, L., Saito, Y. D. & Kool, E. T. (2004). *J. Am. Chem. Soc.* **126**, 1102–1109.
Sheldrick, G. M. (1996). *SADABS*. University of Göttingen, Germany.
Sheldrick, G. M. (2008). *Acta Cryst.* **A64**, 112–122.
Spek, A. L. (2009). *Acta Cryst.* **D65**, 148–155.

supplementary materials

Acta Cryst. (2011). E67, m137 [doi:10.1107/S1600536810053687]

Diaqua[3,5-bis(4-pyridyl)-1*H*-1,2,4-triazole- κ N³](pyridine-2,6-dicarboxylato- κ^3 O²,N,O⁶)nickel(II)

F.-J. Cheng, Y.-S. Wang and Y.-C. Liu

Comment

As a contribution to structural studies of coordination abilities of 1*H*-3,5-bis(4-pyridyl)-1,2,4-triazole (BPT) ligand (Huang *et al.*, 2010*a,b*), we present here the crystal structure of the title compound (Fig. 1)- a new nickel(II) complex with the BPT and pyridine-2,6-dicarboxylate(PDC) ligands.

Within the title compound, the nickel(II) center is six-coordinated respectively by two carboxylic O atoms [Ni1—O1 2.112 (3) Å, Ni1—O3 2.103 (3) Å,] and one N atom of PDC [Ni1—N1 1.989 (3) Å], as well as one N atom of BPT ligand [Ni1—N2 2.054 (3) Å], from the equatorial orientation, while two O atoms of two H₂O occupy the axial positions. Nickel(II) center shows a distorted octahedral coordination geometries, with bond angles of N1—Ni1—N2 175.31 (14)°, O1—Ni1—O3 156.12 (10) ° and O5—Ni1—O6 176.93 (14)°, respectively. Viewed from the whole crystal structure, each complex is linked together by intermolecular O—H...O hydrogen bonds from H₂O and carboxyl of PDC to form a supramolecular structure.

Experimental

1*H*-3,5-bis(4-pyridyl)-1,2,4-triazole (BPT) was prepared according to the literature (Liu *et al.*, 2004). A mixture of pyridine-2,6-dicarboxylic acid (0.084 g, 0.5 mmol), Ni(NO₃)₂·6H₂O (0.145 g, 0.5 mmol), NaOH (0.040 g, 1 mmol), BPT (0.112 g, 0.5 mmol), ethanol (0.1 ml), and H₂O (10 ml) was enclosed in a Teflon-lined autoclave under autogenous pressure at 383 K for 4 days after stirring. Red block crystals were then obtained with yield of 47% (based on Ni^{II}). Single crystals fit for X-ray diffraction analysis was picked out for measurement. Elemental analysis calculated for C₁₉H₁₆N₆NiO₆: C, 47.20; H, 3.31; N, 17.39. Found: C, 46.97; H, 3.51; N, 17.21.

Refinement

C-bound H atoms were geometrically positioned (C—H 0.93 Å) and allowed to ride on their parent atoms, with $U_{\text{iso}}(\text{H}) = 1.2 U_{\text{eq}}(\text{C})$. N- and O-bound H atoms were located on a difference map and refined isotropically with restraints (O—H = 0.85 (4) Å; N—H = 0.90 (4) Å).

Figures

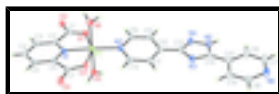


Fig. 1. The molecular structure of the title compound showing the atom-labelling scheme. Displacement ellipsoids are drawn at the 30% probability level.

Diaqua[3,5-bis(4-pyridyl)-1H-1,2,4-triazole- κN^3](pyridine-2,6-dicarboxylato- $\kappa^3 O^2, N, O^6$)nickel(II)

Crystal data

$[\text{Ni}(\text{C}_7\text{H}_3\text{NO}_4)(\text{C}_{12}\text{H}_9\text{N}_3)(\text{H}_2\text{O})_2]$	$F(000) = 1984$
$M_r = 483.07$	$D_x = 1.601 \text{ Mg m}^{-3}$
Monoclinic, $C2/c$	Mo $K\alpha$ radiation, $\lambda = 0.71073 \text{ \AA}$
$a = 26.434 (5) \text{ \AA}$	$\theta = 1.5\text{--}25.1^\circ$
$b = 6.0190 (12) \text{ \AA}$	$\mu = 1.02 \text{ mm}^{-1}$
$c = 26.170 (5) \text{ \AA}$	$T = 293 \text{ K}$
$\beta = 105.69 (3)^\circ$	Block, green
$V = 4008.7 (13) \text{ \AA}^3$	$0.32 \times 0.21 \times 0.11 \text{ mm}$
$Z = 8$	

Data collection

Bruker SMART CCD area-detector diffractometer	3534 independent reflections
Radiation source: fine-focus sealed tube graphite	2669 reflections with $I > 2\sigma(I)$
phi and ω scans	$R_{\text{int}} = 0.071$
Absorption correction: multi-scan (<i>SADABS</i> ; Sheldrick, 1996)	$\theta_{\text{max}} = 25.1^\circ$, $\theta_{\text{min}} = 3.2^\circ$
$T_{\text{min}} = 0.768$, $T_{\text{max}} = 0.910$	$h = -31 \rightarrow 31$
10662 measured reflections	$k = -6 \rightarrow 7$
	$l = -31 \rightarrow 30$

Refinement

Refinement on F^2	Secondary atom site location: difference Fourier map
Least-squares matrix: full	Hydrogen site location: inferred from neighbouring sites
$R[F^2 > 2\sigma(F^2)] = 0.063$	H atoms treated by a mixture of independent and constrained refinement
$wR(F^2) = 0.104$	$w = 1/[\sigma^2(F_o^2) + (0.0251P)^2 + 7.5822P]$
$S = 1.11$	where $P = (F_o^2 + 2F_c^2)/3$
3534 reflections	$(\Delta/\sigma)_{\text{max}} < 0.001$
310 parameters	$\Delta\rho_{\text{max}} = 0.33 \text{ e \AA}^{-3}$
7 restraints	$\Delta\rho_{\text{min}} = -0.33 \text{ e \AA}^{-3}$
Primary atom site location: structure-invariant direct methods	Extinction correction: <i>SHELXL97</i> (Sheldrick, 2008), $F_c^* = kF_c[1 + 0.001x F_c^2 \lambda^3 / \sin(2\theta)]^{-1/4}$
	Extinction coefficient: 0.00023 (7)

Special details

Geometry. All esds (except the esd in the dihedral angle between two l.s. planes) are estimated using the full covariance matrix. The cell esds are taken into account individually in the estimation of esds in distances, angles and torsion angles; correlations between esds in cell parameters are only used when they are defined by crystal symmetry. An approximate (isotropic) treatment of cell esds is used for estimating esds involving l.s. planes.

Refinement. Refinement of F^2 against ALL reflections. The weighted R -factor wR and goodness of fit S are based on F^2 , conventional R -factors R are based on F , with F set to zero for negative F^2 . The threshold expression of $F^2 > \sigma(F^2)$ is used only for calculating R -factors(gt) etc. and is not relevant to the choice of reflections for refinement. R -factors based on F^2 are statistically about twice as large as those based on F , and R -factors based on ALL data will be even larger.

Fractional atomic coordinates and isotropic or equivalent isotropic displacement parameters (\AA^2)

	<i>x</i>	<i>y</i>	<i>z</i>	$U_{\text{iso}}^*/U_{\text{eq}}$
Ni1	0.226457 (19)	0.64878 (9)	0.08540 (2)	0.02533 (18)
C1	0.16122 (16)	0.9930 (7)	0.02297 (17)	0.0284 (10)
C2	0.12404 (14)	0.8314 (7)	0.03879 (16)	0.0246 (9)
C3	0.06954 (15)	0.8470 (7)	0.02545 (18)	0.0350 (11)
H3A	0.0521	0.9624	0.0043	0.042*
C4	0.04206 (16)	0.6862 (8)	0.04454 (19)	0.0412 (12)
H4A	0.0056	0.6929	0.0363	0.049*
C5	0.06859 (15)	0.5162 (7)	0.07569 (18)	0.0341 (11)
H5A	0.0504	0.4075	0.0887	0.041*
C6	0.12286 (14)	0.5098 (7)	0.08726 (16)	0.0240 (10)
C7	0.16017 (15)	0.3376 (7)	0.11997 (16)	0.0277 (10)
C8	0.34025 (16)	0.7559 (7)	0.09586 (18)	0.0354 (11)
H8A	0.3270	0.8909	0.0807	0.042*
C9	0.39403 (16)	0.7200 (7)	0.10786 (18)	0.0334 (11)
H9A	0.4161	0.8294	0.1009	0.040*
C10	0.41453 (15)	0.5203 (7)	0.13023 (17)	0.0296 (10)
C11	0.37953 (15)	0.3656 (7)	0.13924 (18)	0.0364 (11)
H11A	0.3916	0.2291	0.1543	0.044*
C12	0.32645 (16)	0.4132 (7)	0.12595 (19)	0.0361 (12)
H12A	0.3036	0.3052	0.1320	0.043*
C13	0.47160 (15)	0.4758 (7)	0.14512 (17)	0.0299 (10)
C14	0.54546 (15)	0.3328 (8)	0.17986 (16)	0.0302 (10)
C15	0.58930 (16)	0.1971 (7)	0.21043 (17)	0.0318 (11)
C16	0.64134 (17)	0.2613 (8)	0.2184 (2)	0.0485 (14)
H16A	0.6497	0.3918	0.2035	0.058*
C17	0.68063 (18)	0.1269 (9)	0.2492 (2)	0.0579 (16)
H17A	0.7153	0.1726	0.2544	0.070*
C18	0.62206 (18)	-0.1208 (8)	0.26260 (19)	0.0441 (13)
H18A	0.6149	-0.2535	0.2774	0.053*
C19	0.57996 (17)	0.0004 (8)	0.23279 (18)	0.0388 (12)
H19A	0.5458	-0.0507	0.2280	0.047*
N1	0.14859 (11)	0.6669 (5)	0.06894 (13)	0.0231 (8)
N2	0.30646 (12)	0.6050 (6)	0.10502 (14)	0.0282 (9)

supplementary materials

N3	0.49458 (12)	0.3023 (6)	0.17511 (14)	0.0329 (9)
N4	0.50503 (12)	0.6110 (6)	0.13012 (15)	0.0363 (10)
N5	0.55201 (13)	0.5164 (6)	0.15348 (15)	0.0352 (10)
N6	0.67239 (15)	-0.0606 (7)	0.27162 (16)	0.0473 (11)
O1	0.20996 (10)	0.9403 (4)	0.03895 (11)	0.0304 (7)
O2	0.14263 (11)	1.1605 (5)	-0.00256 (12)	0.0382 (8)
O3	0.20889 (10)	0.3681 (5)	0.12533 (11)	0.0312 (7)
O4	0.14157 (11)	0.1758 (5)	0.13800 (13)	0.0427 (8)
O5	0.21976 (13)	0.4697 (5)	0.01727 (13)	0.0394 (8)
O6	0.23372 (12)	0.8463 (6)	0.15262 (13)	0.0394 (8)
H5C	0.1995 (14)	0.360 (5)	0.0075 (17)	0.055 (16)*
H6B	0.2635 (11)	0.861 (8)	0.1761 (15)	0.070 (19)*
H5B	0.2419 (14)	0.479 (7)	-0.0008 (16)	0.060 (17)*
H5	0.5810 (13)	0.575 (8)	0.147 (2)	0.076 (19)*
H6C	0.222 (2)	0.977 (5)	0.145 (3)	0.17 (4)*

Atomic displacement parameters (\AA^2)

	U^{11}	U^{22}	U^{33}	U^{12}	U^{13}	U^{23}
Ni1	0.0181 (3)	0.0257 (3)	0.0334 (3)	-0.0014 (3)	0.0092 (2)	0.0005 (3)
C1	0.030 (3)	0.029 (3)	0.024 (3)	-0.004 (2)	0.004 (2)	-0.003 (2)
C2	0.024 (2)	0.023 (2)	0.027 (2)	-0.0006 (19)	0.0068 (19)	-0.001 (2)
C3	0.026 (2)	0.029 (2)	0.046 (3)	0.003 (2)	0.003 (2)	0.007 (2)
C4	0.020 (2)	0.044 (3)	0.059 (3)	0.001 (2)	0.010 (2)	0.007 (3)
C5	0.024 (2)	0.033 (3)	0.048 (3)	-0.006 (2)	0.013 (2)	0.010 (2)
C6	0.021 (2)	0.025 (2)	0.027 (2)	-0.0019 (18)	0.0075 (19)	0.001 (2)
C7	0.028 (2)	0.027 (2)	0.030 (2)	-0.002 (2)	0.011 (2)	-0.001 (2)
C8	0.027 (2)	0.032 (3)	0.045 (3)	0.002 (2)	0.005 (2)	0.009 (2)
C9	0.027 (2)	0.029 (3)	0.046 (3)	-0.0044 (19)	0.013 (2)	0.007 (2)
C10	0.023 (2)	0.032 (3)	0.034 (3)	-0.0009 (19)	0.008 (2)	0.000 (2)
C11	0.026 (2)	0.030 (3)	0.056 (3)	0.003 (2)	0.014 (2)	0.012 (2)
C12	0.023 (2)	0.033 (3)	0.054 (3)	-0.001 (2)	0.012 (2)	0.010 (2)
C13	0.020 (2)	0.038 (3)	0.032 (3)	0.002 (2)	0.007 (2)	0.008 (2)
C14	0.022 (2)	0.037 (3)	0.032 (3)	0.003 (2)	0.007 (2)	0.010 (2)
C15	0.027 (2)	0.040 (3)	0.029 (3)	0.003 (2)	0.009 (2)	0.007 (2)
C16	0.026 (3)	0.055 (3)	0.064 (4)	0.005 (2)	0.013 (3)	0.034 (3)
C17	0.027 (3)	0.072 (4)	0.073 (4)	0.007 (3)	0.011 (3)	0.033 (3)
C18	0.044 (3)	0.042 (3)	0.044 (3)	0.004 (2)	0.009 (3)	0.012 (3)
C19	0.030 (3)	0.044 (3)	0.041 (3)	0.001 (2)	0.006 (2)	0.007 (2)
N1	0.0214 (18)	0.0195 (18)	0.0280 (19)	-0.0029 (16)	0.0057 (16)	-0.0002 (17)
N2	0.0193 (18)	0.031 (2)	0.033 (2)	-0.0017 (16)	0.0054 (16)	-0.0002 (17)
N3	0.0222 (19)	0.038 (2)	0.040 (2)	0.0020 (17)	0.0104 (18)	0.0104 (19)
N4	0.0206 (19)	0.038 (2)	0.052 (3)	0.0041 (17)	0.0113 (18)	0.015 (2)
N5	0.017 (2)	0.039 (2)	0.049 (3)	0.0041 (17)	0.0074 (19)	0.014 (2)
N6	0.035 (2)	0.057 (3)	0.047 (3)	0.012 (2)	0.005 (2)	0.021 (2)
O1	0.0237 (16)	0.0296 (17)	0.0403 (19)	-0.0028 (13)	0.0129 (14)	0.0045 (15)
O2	0.0390 (18)	0.0273 (17)	0.0454 (19)	-0.0032 (15)	0.0063 (15)	0.0097 (17)
O3	0.0206 (15)	0.0348 (17)	0.0394 (18)	0.0019 (14)	0.0103 (14)	0.0095 (15)

O4	0.0305 (17)	0.0379 (19)	0.061 (2)	-0.0006 (15)	0.0153 (16)	0.0213 (18)
O5	0.044 (2)	0.036 (2)	0.046 (2)	-0.0169 (17)	0.0237 (18)	-0.0124 (17)
O6	0.0326 (19)	0.044 (2)	0.036 (2)	0.0048 (17)	-0.0016 (16)	-0.0132 (18)

Geometric parameters (Å, °)

Ni1—N1	1.989 (3)	C10—C13	1.477 (5)
Ni1—O5	2.050 (3)	C11—C12	1.381 (5)
Ni1—N2	2.054 (3)	C11—H11A	0.9300
Ni1—O6	2.088 (3)	C12—N2	1.325 (5)
Ni1—O3	2.103 (3)	C12—H12A	0.9300
Ni1—O1	2.112 (3)	C13—N4	1.336 (5)
C1—O2	1.236 (5)	C13—N3	1.348 (5)
C1—O1	1.282 (4)	C14—N3	1.330 (5)
C1—C2	1.518 (5)	C14—N5	1.339 (5)
C2—N1	1.322 (5)	C14—C15	1.466 (6)
C2—C3	1.391 (5)	C15—C19	1.372 (6)
C3—C4	1.382 (6)	C15—C16	1.389 (6)
C3—H3A	0.9300	C16—C17	1.389 (6)
C4—C5	1.376 (6)	C16—H16A	0.9300
C4—H4A	0.9300	C17—N6	1.317 (6)
C5—C6	1.384 (5)	C17—H17A	0.9300
C5—H5A	0.9300	C18—N6	1.337 (5)
C6—N1	1.328 (5)	C18—C19	1.382 (6)
C6—C7	1.524 (6)	C18—H18A	0.9300
C7—O4	1.241 (5)	C19—H19A	0.9300
C7—O3	1.271 (4)	N4—N5	1.352 (4)
C8—N2	1.340 (5)	N5—H5	0.901 (19)
C8—C9	1.387 (5)	O5—H5C	0.842 (18)
C8—H8A	0.9300	O5—H5B	0.848 (18)
C9—C10	1.382 (6)	O6—H6B	0.861 (19)
C9—H9A	0.9300	O6—H6C	0.854 (19)
C10—C11	1.377 (5)		
N1—Ni1—O5	89.97 (13)	C10—C11—H11A	120.0
N1—Ni1—N2	175.33 (14)	C12—C11—H11A	120.0
O5—Ni1—N2	89.48 (14)	N2—C12—C11	123.3 (4)
N1—Ni1—O6	90.30 (13)	N2—C12—H12A	118.3
O5—Ni1—O6	177.00 (14)	C11—C12—H12A	118.3
N2—Ni1—O6	90.49 (13)	N4—C13—N3	114.4 (3)
N1—Ni1—O3	78.29 (12)	N4—C13—C10	121.4 (4)
O5—Ni1—O3	91.78 (12)	N3—C13—C10	124.2 (4)
N2—Ni1—O3	97.09 (12)	N3—C14—N5	109.5 (4)
O6—Ni1—O3	91.20 (13)	N3—C14—C15	127.2 (4)
N1—Ni1—O1	77.83 (12)	N5—C14—C15	123.2 (4)
O5—Ni1—O1	88.88 (13)	C19—C15—C16	117.4 (4)
N2—Ni1—O1	106.79 (12)	C19—C15—C14	120.4 (4)
O6—Ni1—O1	88.25 (13)	C16—C15—C14	122.1 (4)
O3—Ni1—O1	156.11 (10)	C15—C16—C17	118.7 (4)
O2—C1—O1	126.6 (4)	C15—C16—H16A	120.7

supplementary materials

O2—C1—C2	118.6 (4)	C17—C16—H16A	120.7
O1—C1—C2	114.9 (4)	N6—C17—C16	124.7 (4)
N1—C2—C3	120.6 (4)	N6—C17—H17A	117.6
N1—C2—C1	113.2 (3)	C16—C17—H17A	117.6
C3—C2—C1	126.3 (4)	N6—C18—C19	124.6 (5)
C4—C3—C2	118.2 (4)	N6—C18—H18A	117.7
C4—C3—H3A	120.9	C19—C18—H18A	117.7
C2—C3—H3A	120.9	C15—C19—C18	119.1 (4)
C5—C4—C3	120.1 (4)	C15—C19—H19A	120.5
C5—C4—H4A	120.0	C18—C19—H19A	120.5
C3—C4—H4A	120.0	C2—N1—C6	122.2 (3)
C4—C5—C6	118.8 (4)	C2—N1—Ni1	118.9 (3)
C4—C5—H5A	120.6	C6—N1—Ni1	118.9 (3)
C6—C5—H5A	120.6	C12—N2—C8	117.0 (3)
N1—C6—C5	120.2 (4)	C12—N2—Ni1	118.9 (3)
N1—C6—C7	111.7 (3)	C8—N2—Ni1	124.0 (3)
C5—C6—C7	128.1 (4)	C14—N3—C13	103.5 (3)
O4—C7—O3	124.5 (4)	C13—N4—N5	102.2 (3)
O4—C7—C6	119.0 (3)	C14—N5—N4	110.5 (3)
O3—C7—C6	116.5 (4)	C14—N5—H5	131 (3)
N2—C8—C9	123.1 (4)	N4—N5—H5	118 (3)
N2—C8—H8A	118.5	C17—N6—C18	115.5 (4)
C9—C8—H8A	118.5	C1—O1—Ni1	115.2 (2)
C10—C9—C8	119.5 (4)	C7—O3—Ni1	114.5 (3)
C10—C9—H9A	120.3	Ni1—O5—H5C	125 (3)
C8—C9—H9A	120.3	Ni1—O5—H5B	123 (3)
C11—C10—C9	117.1 (4)	H5C—O5—H5B	111 (3)
C11—C10—C13	121.2 (4)	Ni1—O6—H6B	121 (3)
C9—C10—C13	121.7 (4)	Ni1—O6—H6C	112 (5)
C10—C11—C12	120.0 (4)	H6B—O6—H6C	107 (3)
O2—C1—C2—N1	-175.7 (4)	O1—Ni1—N1—C2	1.3 (3)
O1—C1—C2—N1	3.1 (5)	O5—Ni1—N1—C6	90.5 (3)
O2—C1—C2—C3	2.9 (6)	N2—Ni1—N1—C6	7.3 (19)
O1—C1—C2—C3	-178.3 (4)	O6—Ni1—N1—C6	-92.5 (3)
N1—C2—C3—C4	0.0 (6)	O3—Ni1—N1—C6	-1.3 (3)
C1—C2—C3—C4	-178.5 (4)	O1—Ni1—N1—C6	179.4 (3)
C2—C3—C4—C5	-0.2 (7)	C11—C12—N2—C8	1.2 (7)
C3—C4—C5—C6	-0.1 (7)	C11—C12—N2—Ni1	178.3 (3)
C4—C5—C6—N1	0.7 (6)	C9—C8—N2—C12	-0.8 (7)
C4—C5—C6—C7	-179.1 (4)	C9—C8—N2—Ni1	-177.8 (3)
N1—C6—C7—O4	-177.3 (4)	N1—Ni1—N2—C12	4.0 (19)
C5—C6—C7—O4	2.5 (7)	O5—Ni1—N2—C12	-79.3 (3)
N1—C6—C7—O3	0.5 (5)	O6—Ni1—N2—C12	103.7 (3)
C5—C6—C7—O3	-179.7 (4)	O3—Ni1—N2—C12	12.5 (3)
N2—C8—C9—C10	0.1 (7)	O1—Ni1—N2—C12	-167.9 (3)
C8—C9—C10—C11	0.2 (7)	N1—Ni1—N2—C8	-179 (100)
C8—C9—C10—C13	-178.3 (4)	O5—Ni1—N2—C8	97.7 (4)
C9—C10—C11—C12	0.1 (7)	O6—Ni1—N2—C8	-79.3 (4)
C13—C10—C11—C12	178.6 (4)	O3—Ni1—N2—C8	-170.6 (3)

C10—C11—C12—N2	-0.8 (7)	O1—Ni1—N2—C8	9.0 (4)
C11—C10—C13—N4	170.7 (4)	N5—C14—N3—C13	-0.3 (5)
C9—C10—C13—N4	-10.8 (7)	C15—C14—N3—C13	177.4 (4)
C11—C10—C13—N3	-10.5 (7)	N4—C13—N3—C14	1.0 (5)
C9—C10—C13—N3	168.0 (4)	C10—C13—N3—C14	-177.8 (4)
N3—C14—C15—C19	8.3 (7)	N3—C13—N4—N5	-1.3 (5)
N5—C14—C15—C19	-174.3 (4)	C10—C13—N4—N5	177.6 (4)
N3—C14—C15—C16	-171.1 (5)	N3—C14—N5—N4	-0.5 (5)
N5—C14—C15—C16	6.3 (7)	C15—C14—N5—N4	-178.4 (4)
C19—C15—C16—C17	-1.3 (7)	C13—N4—N5—C14	1.1 (5)
C14—C15—C16—C17	178.1 (5)	C16—C17—N6—C18	0.8 (8)
C15—C16—C17—N6	0.3 (9)	C19—C18—N6—C17	-0.9 (7)
C16—C15—C19—C18	1.1 (7)	O2—C1—O1—Ni1	176.6 (3)
C14—C15—C19—C18	-178.2 (4)	C2—C1—O1—Ni1	-2.0 (4)
N6—C18—C19—C15	-0.1 (7)	N1—Ni1—O1—C1	0.5 (3)
C3—C2—N1—C6	0.6 (6)	O5—Ni1—O1—C1	90.7 (3)
C1—C2—N1—C6	179.3 (3)	N2—Ni1—O1—C1	179.9 (3)
C3—C2—N1—Ni1	178.6 (3)	O6—Ni1—O1—C1	-90.2 (3)
C1—C2—N1—Ni1	-2.7 (4)	O3—Ni1—O1—C1	-1.1 (5)
C5—C6—N1—C2	-1.0 (6)	O4—C7—O3—Ni1	176.1 (3)
C7—C6—N1—C2	178.8 (3)	C6—C7—O3—Ni1	-1.6 (4)
C5—C6—N1—Ni1	-178.9 (3)	N1—Ni1—O3—C7	1.6 (3)
C7—C6—N1—Ni1	0.9 (4)	O5—Ni1—O3—C7	-88.0 (3)
O5—Ni1—N1—C2	-87.5 (3)	N2—Ni1—O3—C7	-177.7 (3)
N2—Ni1—N1—C2	-170.7 (16)	O6—Ni1—O3—C7	91.6 (3)
O6—Ni1—N1—C2	89.5 (3)	O1—Ni1—O3—C7	3.2 (5)
O3—Ni1—N1—C2	-179.3 (3)		

Hydrogen-bond geometry (\AA , $^\circ$)

$D-H\cdots A$	$D-H$	$H\cdots A$	$D\cdots A$	$D-H\cdots A$
N5—H5 \cdots O4 ⁱ	0.88 (4)	1.81 (4)	2.685 (5)	179 (7)
O5—H5B \cdots O1 ⁱⁱ	0.86 (4)	1.87 (4)	2.718 (5)	168 (5)
O5—H5C \cdots O2 ⁱⁱⁱ	0.86 (4)	1.89 (4)	2.705 (5)	160 (4)
O6—H6B \cdots N6 ^{iv}	0.87 (4)	1.93 (4)	2.781 (5)	167 (6)
O6—H6C \cdots O3 ^v	0.86 (4)	2.39 (4)	3.246 (5)	169 (8)
O6—H6C \cdots O4 ^v	0.86 (4)	2.41 (7)	3.081 (5)	135 (6)

Symmetry codes: (i) $x+1/2, y+1/2, z$; (ii) $-x+1/2, -y+3/2, -z$; (iii) $x, y-1, z$; (iv) $-x+1, y+1, -z+1/2$; (v) $x, y+1, z$.

Fig. 1

